



4 bed detached house to buy in

Richmond Drive, Woodstone Village,
Houghton Le Spring, Durham, DH4 6TX

£260,000

🏠 x4 🚗 x3 🚗 x1

Tenure

Freehold

Property features

- ✓ Detached
- ✓ Four Bedrooms
- ✓ Driveway & Garage
- ✓ Close to Local Amenities
- ✓ EPC Rating C

Driveway & Garage parking

Garden

Key Information

- ✓ Council Tax: Band D
- ✓ EPC Rating: C
- ✓ Heating supply: Gas

Description

Stunning Four-Bedroom Detached Home with High-End Finishes & Entertainer's Garden

Pattinson Estate Agents are delighted to welcome to the market this exceptional four-bedroom detached property, set in the sought-after Richmond Drive, Woodstone Village. This beautifully decorated home has been thoughtfully laid out to offer spacious and stylish living, perfect for families and entertainers alike.

The heart of the home is the impressive open-plan kitchen and dining area designed for contemporary living. As well as a lounge, dining room, and downstairs W.C. Upstairs, there are four well-proportioned bedrooms that offer ample accommodation, the master including an en-suite and family bathroom.

The outdoor space is equally impressive, with a meticulously maintained garden which includes separate decking and seating areas—perfect for entertaining guests or unwinding in style.

Ideally positioned within close proximity to local shops and other amenities, good public transport and major road links via A1. Also within walking distance to popular schools and just a short drive to both Elba Park, Rainton Meadows Nature Reserve and major city centre's

Contact us today to arrange a viewing!

Council Tax Band: D

Tenure: Freehold

Price: £260,000

Property Type: Detached House

USPs: Garden

Parking: Driveway & Garage

Heating: Gas

External



Hall

2.49m x 1.66m (8'2" x 5'5")



Living Room/ dinner

4.82m x 3.44m (15'9" x 11'3")



Dining Room



Kitchen

4.27m x 2.91m (14'0" x 9'6")



Downstairs W.C

1.54m x 0.88m (5'0" x 2'10")



Landing

2.45m x 1.87m (8'0" x 6'1")



Bedroom 1

4.29m x 2.70m (14'0" x 8'10")



En-suite

2.61m x 1.08m (8'6" x 3'6")



Bedroom 2

4.43m x 2.53m (14'6" x 8'3")



Bedroom 3

2.77m x 2.35m (9'1" x 7'8")



Bedroom 4

2.68m x 2.39m (8'9" x 7'10")



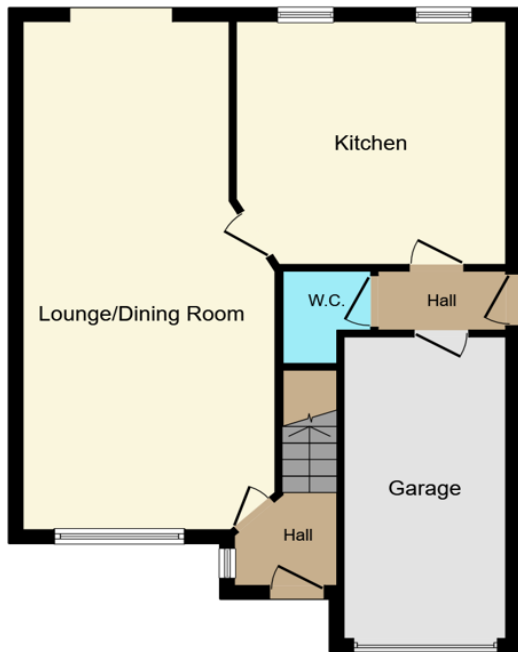
Bathroom

1.93m x 1.70m (6'3" x 5'6")

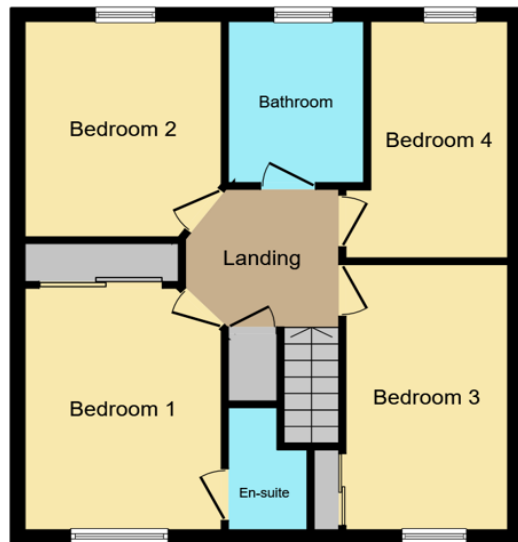


Garden





Ground Floor



First Floor

This floor plan is for illustrative purposes only. It is not drawn to scale. Any measurements, floor areas (including any total floor area), openings and orientations are approximate. No details are guaranteed, they cannot be relied upon for any purpose and do not form any part of any agreement. No liability is taken for any error, omission or misstatement. A party must rely upon its own inspection(s). Powered by www.Propertybox.io

Energy Efficiency Rating		
	Current	Potential
<i>Very energy efficient - lower running costs</i>		
(92-100) A		
(81-91) B		84
(69-80) C	74	
(55-68) D		
(39-54) E		
(21-38) F		
(1-20) G		
<i>Not energy efficient - higher running costs</i>		
England, Scotland & Wales	EU Directive 2002/91/EC	

Richmond Drive, Woodstone Village, Houghton Le Spring, Durham, DH4 6TX

Contact your local branch today for more information on this property:

79 Victoria Road East, Thornton-Cleveleys, Lancashire, FY5 5BU, www.seea.co.uk/index.php

These particulars, whilst believed to be accurate are set out as a general outline only for guidance and do not constitute any part of an offer or contract. Intending purchasers should not rely on them as statements of representation of fact, but must satisfy themselves by inspection or otherwise as to their accuracy. No person in this firm's employment has the authority to make or give any representation or warranty in respect of the property.

