



## 4 bed semi-detached house to buy in NE23

Frome Place, Cramlington, Cramlington, Northumberland, NE23 1TE

**£269,950** Offers over

 x 4
  x 2
  x 1

Tenure

**Freehold**

## Property features

- ✓ Ideal family home
- ✓ Generous open plan kitchen/diner
- ✓ En suite to master
- ✓ Two sets of french doors
- ✓ Well proportioned bedrooms

Driveway & Garage parking

## Key Information

- ✓ Council Tax: Band C
- ✓ Heating supply: Gas

## Description

Occupying a sought-after position in the heart of Cramlington, this superb four-bedroom home offers generous living space, ideal for modern family life. There are four well-proportioned bedrooms, with the main bedroom boasting its own en suite for added comfort and privacy.

The beautifully maintained property features a bright and spacious kitchen/diner with a granite worktop extending over a breakfast bar, perfect for family gatherings or entertaining guests, enhanced by two sets of elegant French doors that open onto the garden, flooding the space with natural light. The home has been carefully looked after, ensuring a welcoming and immaculate environment throughout.

Families are well catered for, with a driveway and garage providing plenty of off-street parking and secure storage. The family bathroom and additional en suite ensure convenience for even the busiest households.

Nestled within a popular estate, the property is perfectly positioned for access to the area's excellent local amenities. A range of reputable schools, convenient shops, and leisure facilities are all within easy reach, while there are green spaces offering opportunities for walks. Superb transport links make commuting into Newcastle and across the North East straightforward, making this location sought after for those working nearby.

Combining modern comfort with an enviable location, this inviting family home is an opportunity not to be missed. Arrange a viewing today to fully appreciate everything this wonderful property and its surroundings have to offer.

Council Tax Band: C

Tenure: Freehold

Price: Offers over £269,950

Property Type: Semi-detached house

Parking: Driveway & Garage

Heating: Gas

## Hallway



## Living Room



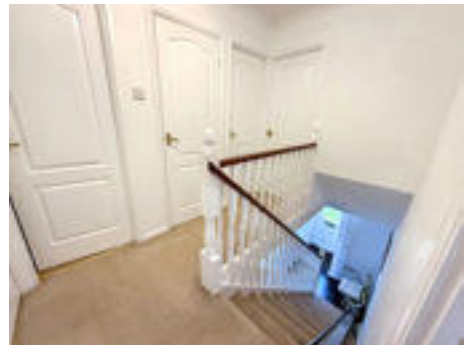
## Kitchen/diner



## Alternate image



## Landing



## Bedroom 1

**En suite**

---

**Bedroom 2**

---

**Bedroom 3**

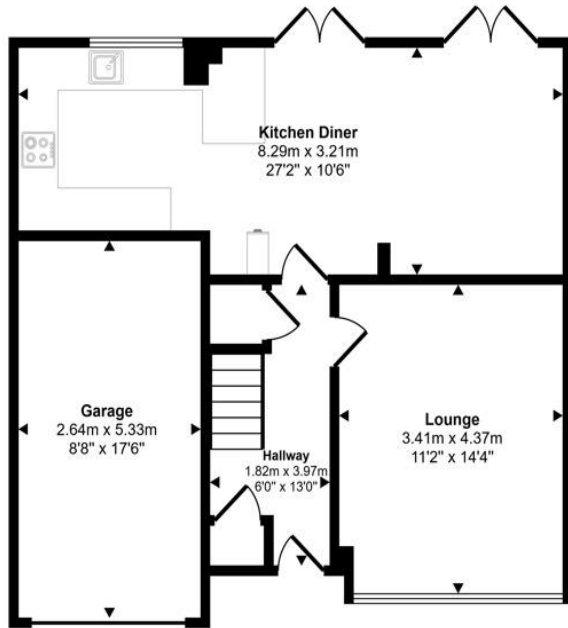
---

**Bathroom**

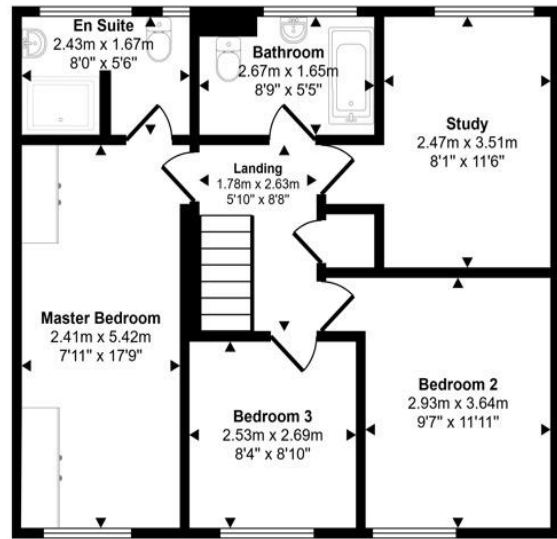


**External**

Approx Gross Internal Area  
122 sq m / 1311 sq ft



Ground Floor  
Approx 64 sq m / 684 sq ft



First Floor  
Approx 58 sq m / 627 sq ft

This floorplan is only for illustrative purposes and is not to scale. Measurements of rooms, doors, windows, and any items are approximate and no responsibility is taken for any error, omission or mis-statement. Icons of items such as bathroom suites are representations only and may not look like the real items. Made with Made Snappy 360.

Frome Place, Cramlington, Cramlington, Northumberland, NE23 1TE

Contact your local branch today for more information on this property:

**79 Victoria Road East, Thornton-Cleveleys, Lancashire, FY5 5BU, [www.seea.co.uk/index.php](http://www.seea.co.uk/index.php)**

These particulars, whilst believed to be accurate are set out as a general outline only for guidance and do not constitute any part of an offer or contract. Intending purchasers should not rely on them as statements of representation of fact, but must satisfy themselves by inspection or otherwise as to their accuracy. No person in this firm's employment has the authority to make or give any representation or warranty in respect of the property.

