



## 6 bed semi-detached house to buy in NE4

Gowland Avenue, Fenham, Newcastle upon Tyne, Tyne and Wear, NE4 9NH

# £450,000

🏠 x 6 🚗 x 3 🚲 x 2

Tenure

**Freehold**

## Property features

- ✓ Semi Detached House - 6
- ✓ Sought After Location
- ✓ Ground Floor Bedroom with
- ✓ Off-street Parking to Driveway
- ✓ EPC Rating D

Driveway parking

## Key Information

- ✓ Council Tax: Band B
- ✓ EPC Rating: D
- ✓ Heating supply: Gas

## Description

Stunning 6-Bedroom Semi-Detached Home – Gowland Avenue, Fenham, Newcastle upon Tyne

An exceptional opportunity to acquire this beautifully modern and spacious six-bedroom semi-detached family home, superbly positioned on the sought-after Gowland Avenue in Fenham. Thoughtfully extended and finished to an impressive standard throughout, this property showcases quality materials, elegant design, and contemporary living spaces perfectly suited to modern family life.

Upon entering, the welcoming hallway sets the tone for the rest of the home with its bright and stylish décor. The spacious lounge offers a relaxing retreat, while the separate dining room provides an ideal space for entertaining or family gatherings. To the rear lies the show-stopping extended kitchen, beautifully fitted with premium units, integrated appliances, and high-end finishes. This stunning space is flooded with natural light, creating the perfect environment for everyday living.

The ground floor also benefits from a modern shower room and a generous sixth bedroom complete with an en-suite, offering excellent flexibility for guests or multi-generational living. Upstairs, there are five further bedrooms, all tastefully decorated and finished to a high standard. The contemporary family bathroom is beautifully appointed, featuring sleek tiling and stylish fixtures. Externally, the home offers excellent kerb appeal with a well-maintained frontage and off-street parking to the driveway. The rear garden provides a pleasant outdoor area ideal for relaxation or entertaining.

Situated in a popular and well-connected part of Fenham, the property is close to local amenities, shops, reputable schools, and public transport links providing easy access to Newcastle city centre and beyond. This outstanding home combines space, sophistication, and modern comfort in one of the area's most desirable locations.

Council Tax Band: B

Tenure: Freehold

Price: £450,000

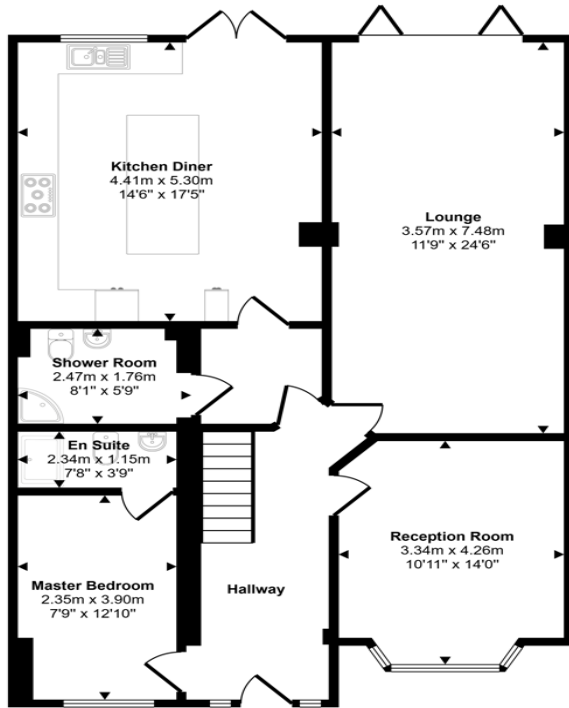
Property Type: Semi-detached house

Parking: Driveway

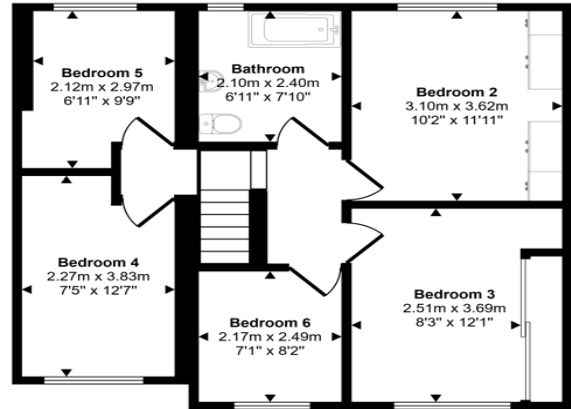
Heating: Gas

## Entrance Hall

Approx Gross Internal Area  
157 sq m / 1693 sq ft



Ground Floor  
Approx 99 sq m / 1062 sq ft



First Floor  
Approx 59 sq m / 631 sq ft

This floorplan is only for illustrative purposes and is not to scale. Measurements of rooms, doors, windows, and any items are approximate and no responsibility is taken for any error, omission or mis-statement. Icons of items such as bathroom suites are representations only and may not look like the real items. Made with Made Snappy 360.

Energy Efficiency Rating		Current	Potential
<i>Very energy efficient - lower running costs</i>			
(92-100) <b>A</b>			
(81-91) <b>B</b>			82
(69-80) <b>C</b>			
(55-68) <b>D</b>		67	
(39-54) <b>E</b>			
(21-38) <b>F</b>			
(1-20) <b>G</b>			
<i>Not energy efficient - higher running costs</i>			
<b>England, Scotland &amp; Wales</b>		EU Directive 2002/91/EC	

Gowland Avenue, Fenham, Newcastle upon Tyne, Tyne and Wear, NE4 9NH

Contact your local branch today for more information on this property:

**79 Victoria Road East, Thornton-Cleveleys, Lancashire, FY5 5BU, [www.sea.co.uk/index.php](http://www.sea.co.uk/index.php)**

These particulars, whilst believed to be accurate are set out as a general outline only for guidance and do not constitute any part of an offer or contract. Intending purchasers should not rely on them as statements of representation of fact, but must satisfy themselves by inspection or otherwise as to their accuracy. No person in this firm's employment has the authority to make or give any representation or warranty in respect of the property.

