



2 bed lower flat to buy in NE23

Harwood Close, Cramlington,
Cramlington, Northumberland, NE23 6AN

£79,950

🛏 x2 🚿 x1 🚗 x1

Tenure

Leasehold

Driveway & Garage parking

Property features

- ✓ Tenanted property
- ✓ Ground floor flat
- ✓ Great location, central Cramlington
- ✓ Garage and drive
- ✓ EPC Rating D

Key Information

- ✓ Council Tax: Band A
- ✓ EPC Rating: D
- ✓ Heating supply: Gas

Description

Ground floor Bellway flat with garage and garden! Sold with tenant in situ. Ideally placed property offering an investment opportunity for a landlord. Currently let at £550 pcm.

The property comprises entrance hallway, living room, two double bedrooms, kitchen and bathroom. Externally there are is a garden to the rear and access to the garage with driveway.

Well placed in this popular estate within easy walking distance to local shops and amenities.

Short lease, Cash buyers only.

Council Tax Band: A

Tenure: Leasehold

Length of Lease: 37 years

Price: £79,950

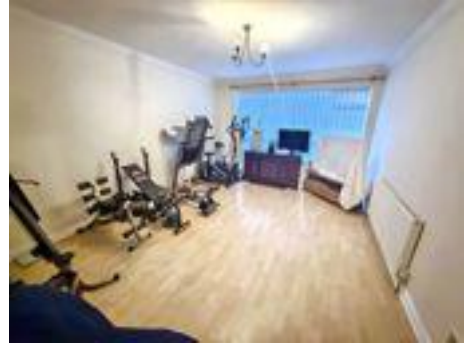
Property Type: Lower Flat

Parking: Driveway & Garage

Heating: Gas

Entrance hallway

Living Room



Kitchen

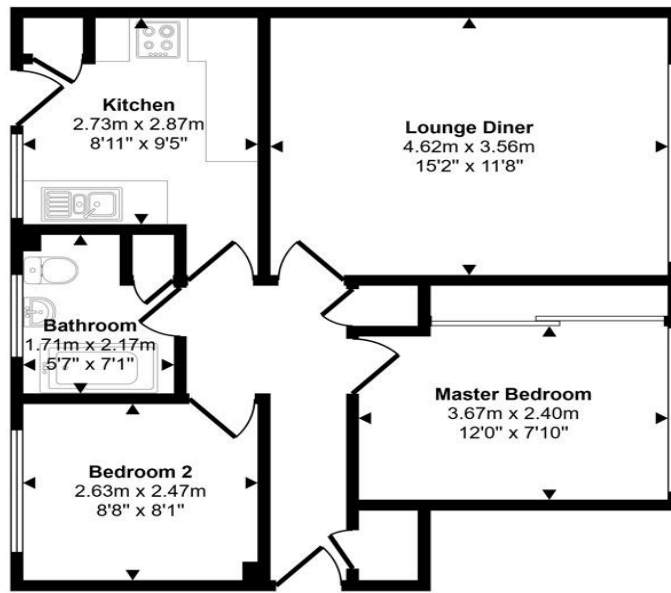
Bedroom 1

Bedroom 2

Bathroom

External

Approx Gross Internal Area
55 sq m / 592 sq ft



Floorplan

This floorplan is only for illustrative purposes and is not to scale. Measurements of rooms, doors, windows, and any items are approximate and no responsibility is taken for any error, omission or mis-statement. Icons of items such as bathroom suites are representations only and may not look like the real items. Made with Made Snappy 360.

Energy Efficiency Rating		Current	Potential
<i>Very energy efficient - lower running costs</i>			
(92-100) A			
(81-91) B			
(69-80) C			75
(55-68) D		67	
(39-54) E			
(21-38) F			
(1-20) G			
<i>Not energy efficient - higher running costs</i>			
England, Scotland & Wales		EU Directive 2002/91/EC	

Harwood Close, Cramlington, Cramlington, Northumberland, NE23 6AN

Contact your local branch today for more information on this property:

79 Victoria Road East, Thornton-Cleveleys, Lancashire, FY5 5BU, www.seea.co.uk/index.php

These particulars, whilst believed to be accurate are set out as a general outline only for guidance and do not constitute any part of an offer or contract. Intending purchasers should not rely on them as statements of representation of fact, but must satisfy themselves by inspection or otherwise as to their accuracy. No person in this firm's employment has the authority to make or give any representation or warranty in respect of the property.

