



3 bed terraced house to buy in

East Stevenson Street, Westoe, South Shields, Tyne and Wear, NE33 3PN

£135,000

🏠 x3 🚗 x1 🚲 x1

Tenure

Freehold

On Street parking

Property features

- ✓ THREE BEDROOM TERRACE HOUSE
- ✓ GAS CENTRAL HEATING AND DOUBLE GLAZED
- ✓ OPEN PLAN KITCHEN/DINER
- ✓ GREAT LOCATION AND AMENITIES

Key Information

- ✓ Council Tax: Band A
- ✓ Heating supply: Gas
- ✓ Electric supply: National Grid
- ✓ Water supply: Direct mains water
- ✓ Broadband: ADSL copper wire
- ✓ Mobile signal: Good

Description

| THREE BEDROOM | TERRACE HOUSE | GAS CENTRAL HEATING | DOUBLE GLAZED | NO UPPER CHAIN |

We are delighted to offer to the market this three bedroom terrace house on the popular East Stevenson Street, South Shields. Benefiting from gas central heating and double glazing the property is well placed for local amenities and would make a great family home.

Comprising briefly :- Upvc door to the entrance hallway with doors to the lounge and kitchen/diner, stairs to the first floor landing. To the first floor landing lie bedroom one, bedroom two, bedroom three and family bathroom. Externally a large private yard lies to the rear.

Offered for sale with no upper chain early viewing is essential..

Council Tax Band: A

Tenure: Freehold

Price: £135,000

Property Type: Terraced House

Parking: On Street

Year built: 1890

Construction materials: Brick and block

Roofing type: Slate tiles

Risk of floods and or erosion: No

Flooded in last 5 years: No

Flood defences: No

Planning permissions or proposals for development: No

Coalfield or mining area: Yes

Listed property: No

Conservation area: No

Public rights of way: No

Adaptions for accessibility: No

Restrictions: No

Required access: No

Heating: Gas

Electric: National Grid

Water: Direct mains water

Sewerage: Standard UK domestic

Air conditioning: No

Broadband: ADSL copper wire, Cable, FTTC (fibre to the cabinet), FTTP (fibre to the premises)

Mobile signal coverage: Good

Entrance

Upvc door to the entrance hallway with door so the lounge and kitchen/diner. Stairs to the first floor landing.



Lounge

Double glazed window to the front and central heating radiator.



Kitchen/ diner

Fitted with a range of wall and base units with roll top work surfaces, one and a half bowl stainless steel sink unit with mixer tap and splash back. Electric cooker point and extractor hood. Plumbed for automatic washing machine and double glazed window to the rear. French door so the patio and central heating radiator.



Diner



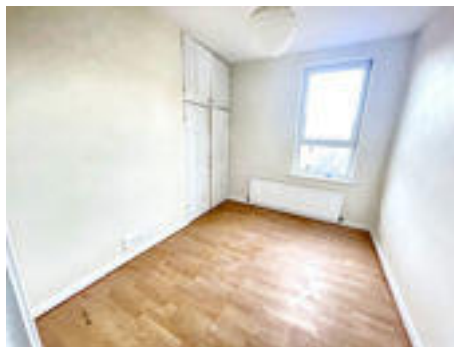
Bedroom One.

Double glazed window to the front and central heating radiator.



Bedroom Two

Double glazed window to the rear and central heating radiator,.



Bedroom Three

Double glazed window to the front and central heating radiator.



Bathroom

Comprising low level w.c., panelled bath wash basin and walk in shower cubicle.



External

A large enclosed yard lies to the rear.



Approx Gross Internal Area
97 sq m / 1045 sq ft



Ground Floor
Approx 48 sq m / 513 sq ft

First Floor
Approx 49 sq m / 532 sq ft

This floorplan is only for illustrative purposes and is not to scale. Measurements of rooms, doors, windows, and any items are approximate and no responsibility is taken for any error, omission or mis-statement. Icons of items such as bathroom suites are representations only and may not look like the real items. Made with Made Snappy 360.

East Stevenson Street, Westoe, South Shields, Tyne and Wear, NE33 3PN

Contact your local branch today for more information on this property:

79 Victoria Road East, Thornton-Cleveleys, Lancashire, FY5 5BU, www.seea.co.uk/index.php

These particulars, whilst believed to be accurate are set out as a general outline only for guidance and do not constitute any part of an offer or contract. Intending purchasers should not rely on them as statements of representation of fact, but must satisfy themselves by inspection or otherwise as to their accuracy. No person in this firm's employment has the authority to make or give any representation or warranty in respect of the property.

