



### 3 bed semi-detached house to buy in SR8

Eastdene Way, Peterlee, Peterlee, Durham, SR8 5TL

**£189,995**

🏠 x3 🪑 x2 🚗 x1

Tenure  
**Freehold**

### Property features

- ✓ Three Bedrooms Semi-Detached
- ✓ Open-Plan Kitchen & Dining Area
- ✓ Ready To Move Into
- ✓ Front & Rear Garden
- ✓ EPC Rating C

Garage parking

Garden

## Key Information

- ✓ Council Tax: Band C
- ✓ EPC Rating: C
- ✓ Heating supply: Gas

## Description

Pattinson Estate Agents welcome for sale this impressive three bedrooms semi-detached property situated on Eastdene Way, Peterlee.

\*WALK THROUGH VIDEO TOUR AVAILABLE\*

The property briefly comprises : Hallway, living room, dining area, kitchen, bedroom two, shower room and conservatory are located on the ground floor. Two bedrooms and family bathroom are located on the first floor.

Externally the property offers a garden and a garage. Fully enclosed, well presented and low maintenance garden to the rear elevation.

With its desirable location, overall condition, and attractive features, this property is an excellent choice for those seeking a comfortable and well-equipped home. Don't miss the opportunity to make this property your own. For any further information or to book your internal viewing please call Pattinson.

Council Tax Band: C

Tenure: Freehold

Price: Offers In The Region Of £189,995

Property Type: Semi-detached house

USPs: Garden

Parking: Garage

Heating: Gas

## External Front

Well presented and low maintenance garden to the front elevation.



## Entrance Way

Access via composite door, storage cupboard, radiator and laminate flooring.



## Living Room

Double glazed window to the front elevation, tv point, radiator and laminate flooring.



## Kitchen

This beautiful open plan and generous sized kitchen/ dining room is fitted with a range of modern high gloss wall and base units with slimline work tops. With one and a half sink and drainer unit and built in appliances including; fridge, freezer, washing machine, double range induction hob with double over head extractor hood. With spotlights to the ceiling, laminate flooring, staircase to the first floor, wall mounted radiator and access into the conservatory.



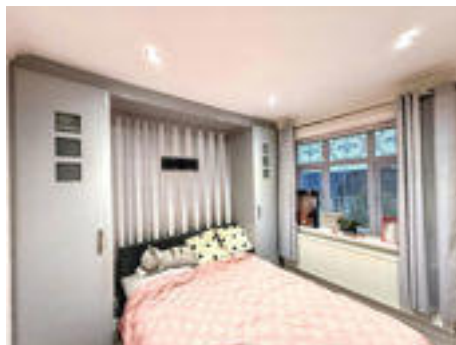
## Shower Room

Double glazed window to the side elevation, three piece suite comprising of a low level WC, wash hand basin with storage units, shower cubicle, radiator and laminate flooring.



## Bedroom Two

Double glazed window to the front elevation, tv point, fitted wardrobes, radiator and carpet.

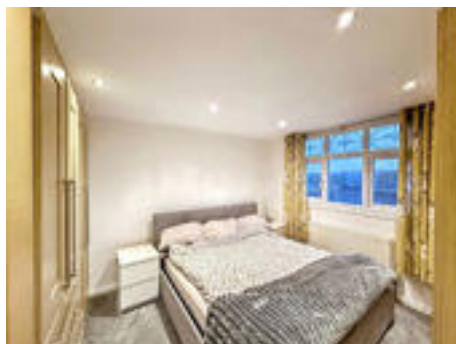


## Landing



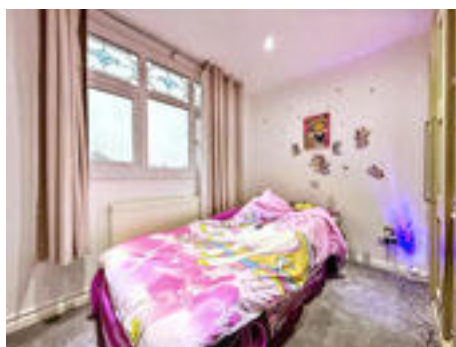
## Bedroom One

Double glazed window to the front elevation, fitted wardrobes, radiator and carpet.



## Bedroom Three

Double glazed window to the front elevation, fitted wardrobes, radiator and carpet.



## Bathroom

Velux window to the the rear elevation, three piece suite comprising: low level WC, wash hand basin with stainless steel mixer tap, bath with stainless steel mixer tap, storage cupboard, radiator and laminate flooring.



## Conservatory

Patio doors leading to the garden, tv point, radiator and laminate flooring.



---

## External Rear

Fully enclosed, well presented and low maintenance garden to the rear elevation.





This plan is for illustration purposes only and may not be representative of the property. Plan not to scale. Powered by PropertyBox

Energy Efficiency Rating		
	Current	Potential
<i>Very energy efficient - lower running costs</i>		
(92-100) <b>A</b>		
(81-91) <b>B</b>		84
(69-80) <b>C</b>	71	
(55-68) <b>D</b>		
(39-54) <b>E</b>		
(21-38) <b>F</b>		
(1-20) <b>G</b>		
<i>Not energy efficient - higher running costs</i>		
<b>England, Scotland &amp; Wales</b>	EU Directive 2002/91/EC	

Eastdene Way, Peterlee, Peterlee, Durham, SR8 5TL

Contact your local branch today for more information on this property:

**79 Victoria Road East, Thornton-Cleveleys, Lancashire, FY5 5BU, [www.seea.co.uk/index.php](http://www.seea.co.uk/index.php)**

These particulars, whilst believed to be accurate are set out as a general outline only for guidance and do not constitute any part of an offer or contract. Intending purchasers should not rely on them as statements of representation of fact, but must satisfy themselves by inspection or otherwise as to their accuracy. No person in this firm's employment has the authority to make or give any representation or warranty in respect of the property.

