



### 3 bed semi-detached house to buy in TS19

Summer Close, Stockton,  
Stockton-on-Tees, Durham, TS19 8GX

**£185,000**

🏠 x3 🚿 x2 🚻 x1

Tenure  
**Freehold**

Driveway parking

### Property features

- ✓ Modern Open-Plan Design
- ✓ Fantastic Home Ideal for First Time Buyers
- ✓ Three Bedroom Semi Detached Property
- ✓ Master Ensuite And Downstairs
- ✓ EPC Rating B

## Key Information

- ✓ Council Tax: Band C
- ✓ EPC Rating: B
- ✓ Heating supply: Gas

## Description

Located on the popular Summer Close, Stockton-on-Tees, this attractive three-bedroom semi-detached home offers modern living ideal for families, first-time buyers, or professionals alike.

The ground floor features a bright and spacious open-plan kitchen and living area, creating a sociable and versatile space perfect for everyday living and entertaining. A convenient downstairs W/C completes the ground floor accommodation. Upstairs, the property offers three well-proportioned bedrooms, including a master bedroom with en-suite shower room, alongside a contemporary family bathroom serving the remaining bedrooms. Externally, the home benefits from a double driveway providing ample off-street parking and an enclosed rear garden, ideal for outdoor dining, children, or pets.

Situated in a sought-after residential location with easy access to local amenities, schools, and transport links, this home combines comfort, style, and practicality in a desirable setting.

Council Tax Band: C

Tenure: Freehold

Price: £185,000

Property Type: Semi-detached house

Parking: Driveway

Heating: Gas

## Entrance



## Kitchen/Dining Area

4.66m x 3.49m (15'3" x 11'5")



## Lounge

5.01m x 3.04m (16'5" x 9'11")



## W/C



## Stairs to First Floor

## Bedroom One

3.78m x 2.62m (12'4" x 8'7")



## Ensuite

2.27m x 1.18m (7'5" x 3'10")



## Bedroom Two

3.17m x 2.63m (10'4" x 8'7")



## Bedroom Three

3.32m x 2.08m (10'10" x 6'9")



## Bathroom W/C

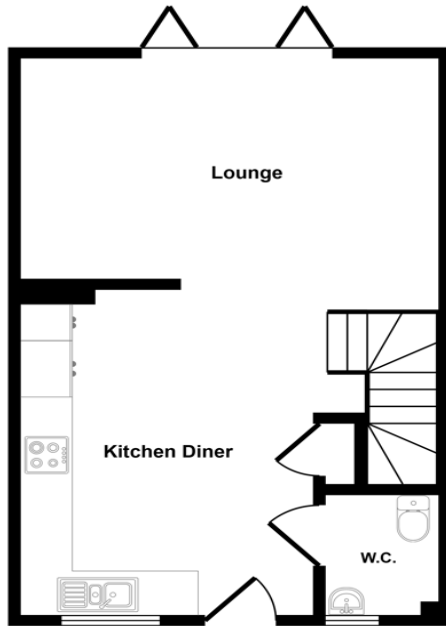
2.31m x 1.69m (7'6" x 5'6")



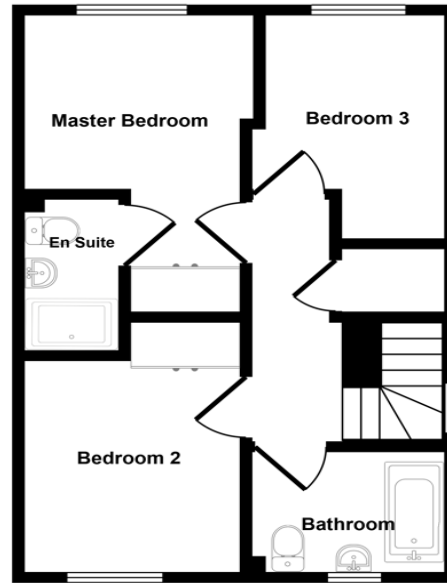
## External



Approx Gross Internal Area  
74 sq m / 801 sq ft



Ground Floor  
Approx 37 sq m / 398 sq ft



First Floor  
Approx 37 sq m / 403 sq ft

This floorplan is only for illustrative purposes and is not to scale. Measurements of rooms, doors, windows, and any items are approximate and no responsibility is taken for any error, omission or mis-statement. Icons of items such as bathroom suites are representations only and may not look like the real items. Made with Made Snappy 360.

Energy Efficiency Rating		
	Current	Potential
<i>Very energy efficient - lower running costs</i>		
(92-100) <b>A</b>		95
(81-91) <b>B</b>	83	
(69-80) <b>C</b>		
(55-68) <b>D</b>		
(39-54) <b>E</b>		
(21-38) <b>F</b>		
(1-20) <b>G</b>		
<i>Not energy efficient - higher running costs</i>		
<b>England, Scotland &amp; Wales</b>	EU Directive 2002/91/EC	

Summer Close, Stockton, Stockton-on-Tees, Durham, TS19 8GX

Contact your local branch today for more information on this property:

**79 Victoria Road East, Thornton-Cleveleys, Lancashire, FY5 5BU, [www.seea.co.uk/index.php](http://www.seea.co.uk/index.php)**

These particulars, whilst believed to be accurate are set out as a general outline only for guidance and do not constitute any part of an offer or contract. Intending purchasers should not rely on them as statements of representation of fact, but must satisfy themselves by inspection or otherwise as to their accuracy. No person in this firm's employment has the authority to make or give any representation or warranty in respect of the property.

