



3 bed semi-detached house to buy in TS19

Patterdale Avenue, Stockton,
Stockton-on-Tees, Durham, TS19 0SF

£105,000

🏠 x3 🪑 x1 🚗 x1

Tenure

Freehold

On Street parking

Property features

- ✓ Semi-Detached House
- ✓ Three Well-Proportioned
- ✓ Gardens to Front and Rear
- ✓ Convenient for Local Schools, Shops and Transport Links

Key Information

- ✓ Council Tax: Band A
- ✓ Heating supply: Gas

Description

Three Bedroom Semi-Detached House | Patterdale Avenue, Stockton-on-Tees

Located on the popular Patterdale Avenue, this well-maintained three bedroom semi-detached property offers spacious accommodation ideal for families, first-time buyers and home movers alike.

The ground floor briefly comprises a bright and comfortable lounge, and a fitted kitchen/diner providing ample space for everyday living and entertaining. To the first floor are three well-proportioned bedrooms and a family bathroom. Externally, the property benefits from gardens to both the front and rear.

Situated within easy reach of local schools, shops and amenities, and offering good transport links to Stockton town centre and surrounding areas, this home represents an excellent opportunity in a well-established residential location.

Viewing is strongly recommended to appreciate the space and location on offer.

Council Tax Band: A

Tenure: Freehold

Price: £105,000

Property Type: Semi-detached house

Parking: On Street

Heating: Gas

Entrance



Kitchen

5.76m x 2.98m (18'10" x 9'9")



Lounge

5.76m x 2.98m (18'10" x 9'9")

Stairs to First Floor

Bedroom One

4.04m x 2.98m (13'3" x 9'9")

Bedroom Two

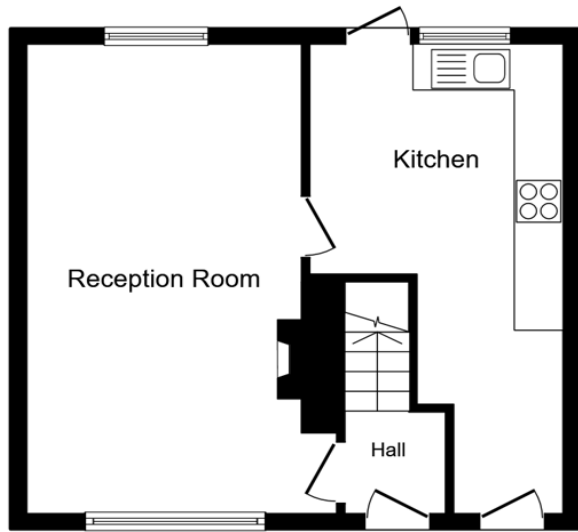
3.48m x 3.06m (11'5" x 10'0")

Bedroom Three

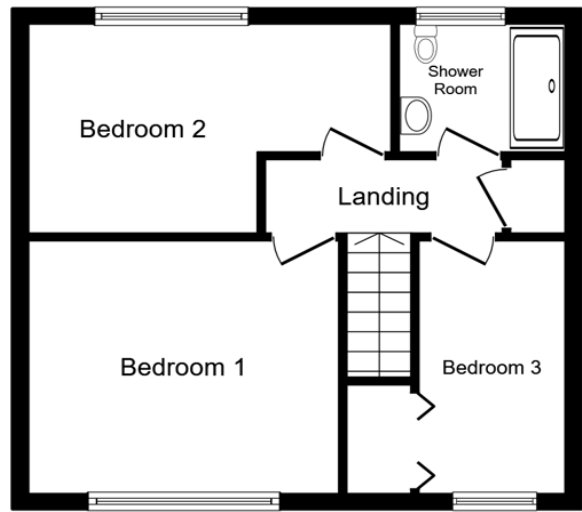
3.50m x 1.97m (11'5" x 6'5")

Bathroom W/C

2.32m x 1.88m (7'7" x 6'2")



Ground Floor



First Floor

This floor plan is for illustrative purposes only. It is not drawn to scale. Any measurements, floor areas (including any total floor area), openings and orientations are approximate. No details are guaranteed, they cannot be relied upon for any purpose and do not form any part of any agreement. No liability is taken for any error, omission or misstatement. A party must rely upon its own inspection(s). Powered by www.Propertybox.io

Patterdale Avenue, Stockton, Stockton-on-Tees, Durham, TS19 0SF

Contact your local branch today for more information on this property:

79 Victoria Road East, Thornton-Cleveleys, Lancashire, FY5 5BU, www.seea.co.uk/index.php

These particulars, whilst believed to be accurate are set out as a general outline only for guidance and do not constitute any part of an offer or contract. Intending purchasers should not rely on them as statements of representation of fact, but must satisfy themselves by inspection or otherwise as to their accuracy. No person in this firm's employment has the authority to make or give any representation or warranty in respect of the property.

