



3 bed semi-detached house to buy in SR8

Moncrieff Terrace, Easington, Peterlee, Durham, SR8 3JB

£75,000

🏠 x3 🚿 x1 🚗 x1

Tenure

Freehold

Allocated parking

Garden

Property features

- ✓ Three bedrooms
- ✓ Semi detached property
- ✓ No Onward Chain
- ✓ Potential rental income £600pcm
- ✓ EPC Rating D

Key Information

- ✓ Council Tax: Band A
- ✓ EPC Rating: D
- ✓ Heating supply: Air Source Heat Pump

Description

Pattinson Estate Agents are delighted to welcome to the sales market this fantastic three bedroom semi detached home, situated on Moncrieff Terrace in Easington, County Durham.

The property benefits from no forward chain and briefly comprises: Entrance vestibule, lounge, kitchen, bathroom and separate WC and three bedrooms. Externally, the property offers enclosed gardens to both front and rear aspects.

With a potential rental return of £600, this property would make a fantastic buy-to-let investment opportunity, or likewise first time buy.

To arrange your viewing, call our local office on: 0191 5183521.

Council Tax Band: A

Tenure: Freehold

Price: Offers In The Region Of £75,000

Property Type: Semi-detached house

USPs: Garden

Parking: Allocated

Heating: Air Source Heat Pump

Entrance Hallway

Living Room



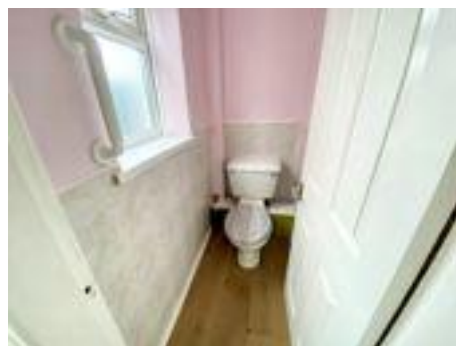
Kitchen



Bathroom



Seperate WC



Bedroom One



Bedroom Two



Bedroom Three



External



Energy Efficiency Rating		
	Current	Potential
<i>Very energy efficient - lower running costs</i>		
(92-100) A		
(81-91) B		
(69-80) C		79
(55-68) D	64	
(39-54) E		
(21-38) F		
(1-20) G		
<i>Not energy efficient - higher running costs</i>		
England, Scotland & Wales	EU Directive 2002/91/EC	

Moncrieff Terrace, Easington, Peterlee, Durham, SR8 3JB

Contact your local branch today for more information on this property:

79 Victoria Road East, Thornton-Cleveleys, Lancashire, FY5 5BU, www.seea.co.uk/index.php

These particulars, whilst believed to be accurate are set out as a general outline only for guidance and do not constitute any part of an offer or contract. Intending purchasers should not rely on them as statements of representation of fact, but must satisfy themselves by inspection or otherwise as to their accuracy. No person in this firm's employment has the authority to make or give any representation or warranty in respect of the property.

