



## 2 bed semi-detached bungalow to buy in TS19

Tanya Gardens, Fairfield,  
Stockton-on-Tees, Durham, TS19 7DU

**£175,000**

🏠 x2 🪑 x1 🚗 x1

Tenure

**Freehold**

## Property features

- ✓ Cul De Sac Location
- ✓ Beautifully Decorated Throughout
- ✓ Extended Semi Detached
- ✓ Private And Enclosed Rear Garden
- ✓ EPC Rating E

Driveway & Garage parking

## Key Information

- ✓ Council Tax: Band C
- ✓ EPC Rating: E
- ✓ Heating supply: Gas

## Description

Situated in the sought-after area of Fairfield, Stockton-on-Tees, this beautifully decorated two-bedroom semi-detached bungalow on Tanya Gardens (TS19 7DU) offers well-presented and spacious accommodation throughout, ideal for a range of buyers.

The property is entered via an entrance leading into a welcoming hallway, which provides access to the main living spaces. The lounge is a comfortable and tastefully decorated room, perfect for relaxing or entertaining. The property also benefits from a kitchen diner, offering ample space for cooking and dining. There are two generously sized double bedrooms, both finished to a high standard and offering versatile accommodation. The home also features a modern shower room as well as the added convenience of a separate W/C. A further highlight of the property is the converted loft space, accessed via pull-down loft stairs, providing a useful additional room that could be used for storage, hobbies, or occasional use.

Externally, the property benefits from a private rear garden, along with a driveway providing off-street parking and access to a detached garage, offering additional storage or parking space.

Beautifully maintained and decorated throughout, this lovely bungalow offers comfortable, move-in ready accommodation in a popular residential location.

Council Tax Band: C

Tenure: Freehold

Price: £175,000

Property Type: Semi-detached Bungalow

Parking: Driveway & Garage

Heating: Gas

## Entrance

---

## Lounge

4.94m x 3.47m (16'2" x 11'4")



## Kitchen/Dining Area

7.23m x 2.81m (23'8" x 9'2")



## Bedroom One

3.23m x 3.18m (10'7" x 10'5")



## Bedroom Two

3.64m x 2.57m (11'11" x 8'5")



## Shower Room

2.22m x 1.50m (7'3" x 4'11")



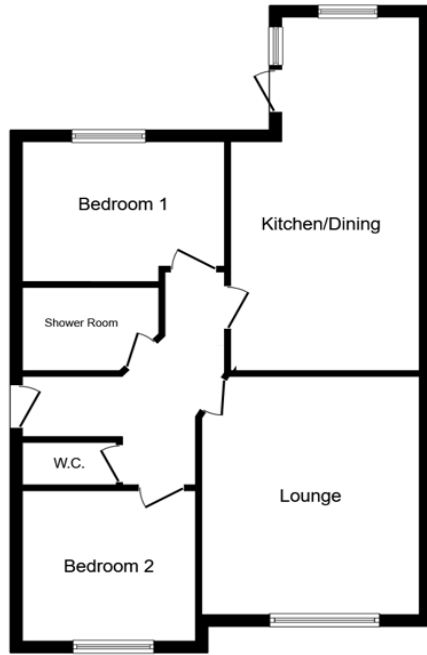
## W/C



---


## External





Floor Plan

This floor plan is for illustrative purposes only. It is not drawn to scale. Any measurements, floor areas (including any total floor area), openings and orientations are approximate. No details are guaranteed, they cannot be relied upon for any purpose and do not form any part of any agreement. No liability is taken for any error, omission or misstatement. A party must rely upon its own inspection(s). Powered by www.Propertybox.io

Energy Efficiency Rating		
	Current	Potential
<i>Very energy efficient - lower running costs</i>		
(92-100) <b>A</b>		
(81-91) <b>B</b>		
(69-80) <b>C</b>		75
(55-68) <b>D</b>	53	
(39-54) <b>E</b>		
(21-38) <b>F</b>		
(1-20) <b>G</b>		
<i>Not energy efficient - higher running costs</i>		
<b>England, Scotland &amp; Wales</b>		EU Directive 2002/91/EC 

Tanya Gardens, Fairfield, Stockton-on-Tees, Durham, TS19 7DU

Contact your local branch today for more information on this property:

**79 Victoria Road East, Thornton-Cleveleys, Lancashire, FY5 5BU, [www.sea.co.uk/index.php](http://www.sea.co.uk/index.php)**

These particulars, whilst believed to be accurate are set out as a general outline only for guidance and do not constitute any part of an offer or contract. Intending purchasers should not rely on them as statements of representation of fact, but must satisfy themselves by inspection or otherwise as to their accuracy. No person in this firm's employment has the authority to make or give any representation or warranty in respect of the property.

