



2 bed end of terrace house to buy in NE11

Laburnum Crescent, Kibblesworth, Gateshead, Tyne and Wear, NE11 0XU

£120,000 Offers Over

 x2
  x1
  x1

Tenure

Freehold

Driveway parking

Property features

-  End Terrace House
-  Two Bedrooms
-  UPVC Double Glazing and Conservatory
-  Gas Central Heating
-  EPC Rating C

Key Information

- ✓ Council Tax: Band A
- ✓ EPC Rating: C
- ✓ Heating supply: Gas

Description

Situated in a sought after village location, conveniently placed for local amenities and with excellent access to the A1 for commuting, this two bedroom end terrace house offers ideal accommodation for a first time buyer, a small family or a potential rental opportunity.

The property benefits from UPVC double glazing, a UPVC double glazed conservatory, gas central heating, and off road parking complete with an electric vehicle charging point. The accommodation comprises an entrance lobby, lounge, kitchen, conservatory, two bedrooms, and a bathroom.

Externally, there are gardens to both the front and rear, with off road parking and a charging point located within the rear garden.

Please note that the larger main bedroom currently features a temporary partition dividing the space into two, which can be easily and quickly removed if desired.

Council Tax Band: A

Tenure: Freehold

Price: Offers Over £120,000

Property Type: End of terrace house

Parking: Driveway

Heating: Gas

Entrance Lobby

Radiator and stairs to the first floor

Lounge

4.10m x 3.80m (13'5" x 12'5")

UPVC double glazed picture window, laminate flooring, under-stairs storage cupboard, radiator



Kitchen

4.90m x 1.80m (16'0" x 5'10")

Fitted in a range of wall and base units with built in gas hob with extractor over, built in electric oven, stainless steel sink and drainer with mixer tap, spaces for automatic washing machine and dishwasher, UPVC double glazed window, radiator, laminate flooring



Conservatory

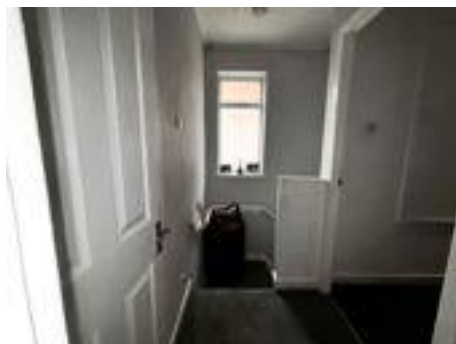
4.90m x 2.10m (16'0" x 6'10")

UPVC double glazed with double doors to the rear garden, laminate flooring



Landing

UPVC double glazed window



Bedroom One

5.20m x 3.10m (17'0" x 10'2")

UPVC double glazed window, radiator, built in storage cupboard.

Note this room has a temporary divider which can be easily removed.



Bathroom

Panelled bath with mains fed shower and folding shower screen, WC, wash basin, tiled wall and floor, chrome heated towel rail, UPVC double glazed window



Bedroom Two

2.50m x 2.60m (8'2" x 8'6")

Fitted wardrobes, UPVC double glazed window, radiator

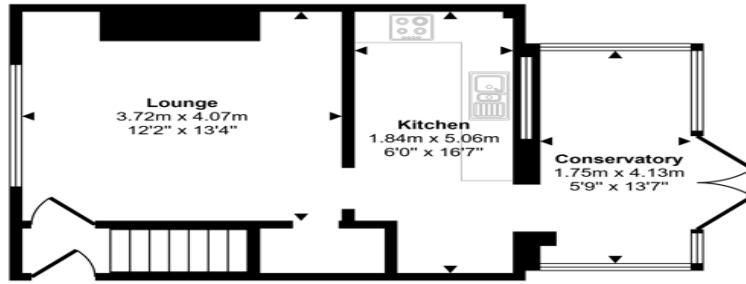


External

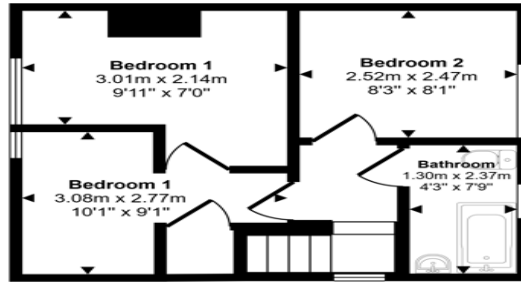
Garden to the front and lawned garden to the rear with off road parking and charging point



Approx Gross Internal Area
66 sq m / 715 sq ft



Ground Floor
Approx 38 sq m / 404 sq ft



First Floor
Approx 29 sq m / 311 sq ft

This floorplan is only for illustrative purposes and is not to scale. Measurements of rooms, doors, windows, and any items are approximate and no responsibility is taken for any error, omission or mis-statement. Icons of items such as bathroom suites are representations only and may not look like the real items. Made with Made Snappy 360.

Energy Efficiency Rating		Current	Potential
Very energy efficient - lower running costs			
(92-100) A			
(81-91) B			83
(69-80) C		69	
(55-68) D			
(39-54) E			
(21-38) F			
(1-20) G			
Not energy efficient - higher running costs			
England, Scotland & Wales		EU Directive 2002/91/EC	

Laburnum Crescent, Kibblesworth, Gateshead, Tyne and Wear, NE11 0XU

Contact your local branch today for more information on this property:

79 Victoria Road East, Thornton-Cleveleys, Lancashire, FY5 5BU, www.seea.co.uk/index.php

These particulars, whilst believed to be accurate are set out as a general outline only for guidance and do not constitute any part of an offer or contract. Intending purchasers should not rely on them as statements of representation of fact, but must satisfy themselves by inspection or otherwise as to their accuracy. No person in this firm's employment has the authority to make or give any representation or warranty in respect of the property.

