



2 bed terraced house to buy in

The Green, Norton, Stockton-on-Tees,
Durham, TS20 1DT

£140,000

🏠 x2 🚗 x1 🚲 x1

Tenure

Freehold

Allocated parking

Property features

- ✓ NO ONWARD CHAIN
- ✓ WONDERFUL SETTING
- ✓ MODERNISATION REQUIRED
- ✓ VIEWS OVER THE GREEN
- ✓ EPC Rating D

Key Information

- ✓ Council Tax: Band A
- ✓ EPC Rating: D
- ✓ Heating supply: Gas
- ✓ Electric supply: National Grid
- ✓ Water supply: Direct mains water
- ✓ Mobile signal: Good

Description

Positioned in one of Norton's most picturesque settings, this charming cottage forms part of the historic Norton Hall and enjoys delightful views across the village green. Rarely do opportunities arise to acquire a home in such an enviable location, further enhanced by access to the beautifully maintained communal grounds to the rear—perfect for relaxing and unwinding in a tranquil environment.

While the property would benefit from a programme of modernisation and upgrading, it presents an exciting opportunity for buyers to create a truly special home tailored to their own tastes, all within a highly sought-after and characterful setting.

The accommodation is well-proportioned and full of potential. To the ground floor, a welcoming vestibule leads into the living room, while a central lobby provides access to the first floor. To the rear, the kitchen offers direct access out to the yard, and there is a bathroom fitted with a three-piece suite.

The first floor hosts two generously sized bedrooms, both offering pleasant aspects and ample space for furnishings.

Offered to the market with the added advantage of no onward chain, this unique home is sure to appeal to a variety of buyers, from those looking for a project to those seeking a distinctive property in a prime village location.

We have been made aware of a service charge in the region of £900.00 per annum.

Early viewing is highly recommended, contact our Norton team today to arrange yours.

Council Tax Band: A

Tenure: Freehold

Price: £140,000

Property Type: Terraced House

Parking: Allocated

Heating: Gas

Electric: National Grid

Water: Direct mains water

Sewerage: Standard UK domestic

Mobile signal coverage: Good

Accommodation

Living Room

4.36m x 4.27m (14'3" x 14'0")



Kitchen

3.68m x 2.82m (12'0" x 9'3")



Bathroom

3.01m x 1.44m (9'10" x 4'8")



Bedroom 1

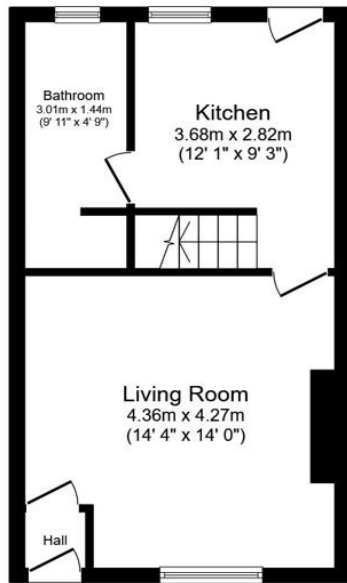
4.37m x 4.28m (14'4" x 14'0")



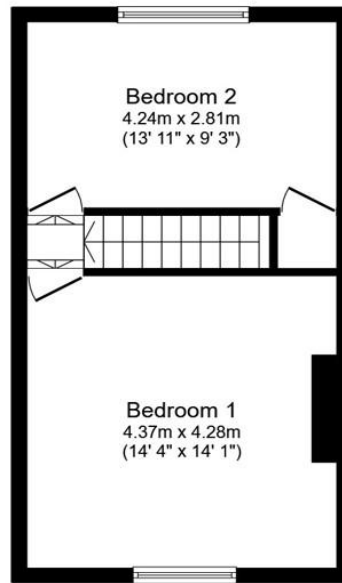
Bedroom 2

4.27m x 2.81m (14'0" x 9'2")





Ground Floor
Floor area 35.5 sq.m. (382 sq.ft.)



First Floor
Floor area 35.5 sq.m. (382 sq.ft.)

Total floor area: 71.0 sq.m. (764 sq.ft.)

This floor plan is for illustrative purposes only. It is not drawn to scale. Any measurements, floor areas (including any total floor area), openings and orientations are approximate. No details are guaranteed, they cannot be relied upon for any purpose and do not form any part of any agreement. No liability is taken for any error, omission or misstatement. A party must rely upon its own inspection(s). Powered by www.Propertybox.io

Energy Efficiency Rating		
	Current	Potential
<i>Very energy efficient - lower running costs</i>		
(92-100) A		
(81-91) B		88
(69-80) C		
(55-68) D	61	
(39-54) E		
(21-38) F		
(1-20) G		
<i>Not energy efficient - higher running costs</i>		
England, Scotland & Wales		EU Directive 2002/91/EC

The Green, Norton, Stockton-on-Tees, Durham, TS20 1DT

Contact your local branch today for more information on this property:

79 Victoria Road East, Thornton-Cleveleys, Lancashire, FY5 5BU, www.sea.co.uk/index.php

These particulars, whilst believed to be accurate are set out as a general outline only for guidance and do not constitute any part of an offer or contract. Intending purchasers should not rely on them as statements of representation of fact, but must satisfy themselves by inspection or otherwise as to their accuracy. No person in this firm's employment has the authority to make or give any representation or warranty in respect of the property.

