



### 3 bed detached house to buy in

Bradwell Way, Philadelphia, Houghton Le Spring, Tyne and Wear, DH4 4XA

**£265,000**

🏠 x3 🚗 x2 🚲 x2

Tenure

**Freehold**

### Property features

- ✓ Three bedroom
- ✓ Beautifully presented
- ✓ Conservatory
- ✓ Integrated appliances
- ✓ EPC Rating D

Driveway & Garage parking

## Key Information

- ✓ Council Tax: Band C
- ✓ EPC Rating: D
- ✓ Heating supply: Gas

## Description

Situated on the highly sought-after Bradwell Way in Philadelphia, Houghton-le-Spring, this truly exceptional three-bedroom detached home occupies a prime position within a beautifully presented modern estate and has been fully renovated to an outstanding standard throughout.

This immaculate property boasts an impressive level of finish, combining contemporary elegance with practical family living. From the moment you step inside, you are greeted by a bright, stylish interior, thoughtfully designed and finished with high-quality fixtures and fittings, creating a home that is both luxurious and welcoming.

The ground floor offers a superb layout, featuring a spacious and beautifully presented living room, perfect for relaxing or entertaining. The stunning modern kitchen is equally impressive, offering generous space and complete with high-spec integrated appliances including a hob, dishwasher, and fridge—ideal for everyday living and hosting alike. To the rear, a sleek and contemporary conservatory provides an additional versatile reception space, flooded with natural light and offering lovely views over the garden.

To the first floor, the property continues to impress with three generously proportioned bedrooms, all tastefully decorated. The master bedroom is a standout feature, benefiting from a stylish private en-suite, while the remaining bedrooms are served by a beautifully finished, modern family bathroom.

Externally, this home excels further. A driveway provides ample off-street parking alongside a garage, while the front garden enhances the property's already attractive kerb appeal. To the rear, you will find a generous, private, and low-maintenance garden—perfectly designed for both relaxation and entertaining, offering a wonderful outdoor retreat.

This outstanding home is ideally located within a desirable and peaceful development, yet remains conveniently close to a range of local amenities, well-regarded schools, and excellent transport links.

Finished to an exceptional standard and ready to move straight into, this property represents a rare opportunity to acquire a truly beautiful home. Early viewing is highly recommended to fully appreciate the quality, space, and lifestyle on offer.

Council Tax Band: C

Tenure: Freehold

Price: £265,000

Property Type: Detached House

Parking: Driveway & Garage

Heating: Gas

## External



## Living Room

6.32m x 5.98m (20'8" x 19'7")



## Dining Room



## Kitchen

3.43m x 3.25m (11'3" x 10'7")

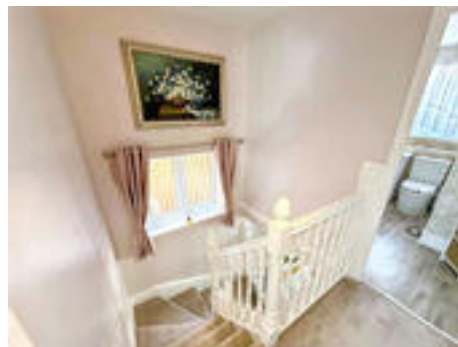


## Conservatory

3.90m x 3.75m (12'9" x 12'3")



## Landing

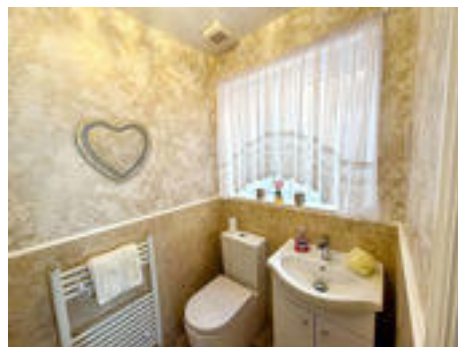


## Master Suite

3.65m x 3.46m (11'11" x 11'4")



## En-suite



## Bedroom 1

3.53m x 3.39m (11'6" x 11'1")



## Bedroom / Office

2.58m x 2.46m (8'5" x 8'0")



## Garden




---

## Patio area





Energy Efficiency Rating		
	Current	Potential
<i>Very energy efficient - lower running costs</i>		
(92-100) <b>A</b>		
(81-91) <b>B</b>		81
(69-80) <b>C</b>		
(55-68) <b>D</b>	67	
(39-54) <b>E</b>		
(21-38) <b>F</b>		
(1-20) <b>G</b>		
<i>Not energy efficient - higher running costs</i>		
<b>England, Scotland &amp; Wales</b>		EU Directive 2002/91/EC 

Bradwell Way, Philadelphia, Houghton Le Spring, Tyne and Wear, DH4 4XA

Contact your local branch today for more information on this property:

**79 Victoria Road East, Thornton-Cleveleys, Lancashire, FY5 5BU, [www.seea.co.uk/index.php](http://www.seea.co.uk/index.php)**

These particulars, whilst believed to be accurate are set out as a general outline only for guidance and do not constitute any part of an offer or contract. Intending purchasers should not rely on them as statements of representation of fact, but must satisfy themselves by inspection or otherwise as to their accuracy. No person in this firm's employment has the authority to make or give any representation or warranty in respect of the property.

