



4 bed terraced house to buy in

Atkinson Road, Newcastle upon Tyne,
Tyne and Wear, NE4 8XX

£115,000 Starting Bid

🏠 x4 🚗 x2 🚲 x2

Tenure

Freehold

On Street parking

Property features

- ✓ To Be Sold Via Online Auction
- ✓ Tenanted Investment
- ✓ Townhouse
- ✓ Four Bedrooms
- ✓ EPC Rating C

Key Information

- ✓ Council Tax: Band B
- ✓ EPC Rating: C
- ✓ Heating supply: Gas

Description

To Be Sold Via Online Auction, Fees Apply.

Property tenanted for £900PCM

Situated on the ever-popular Atkinson Road, Newcastle, this spacious four-bedroom townhouse offers versatile accommodation across three floors and is available for sale with no onward chain.

Ideally positioned just minutes from Newcastle City Centre, the property enjoys excellent access to a wide range of local amenities, transport links, shops, schools, and leisure facilities, making it an ideal purchase for families, professionals, or investors alike.

The accommodation briefly comprises an entrance hall leading to a generous living room and a well-proportioned kitchen diner, providing an excellent space for both everyday living and entertaining. To the first floor are two spacious double bedrooms and a family bathroom. The second floor offers a further two double bedrooms alongside an additional family bathroom, creating flexible living arrangements for larger households.

Externally, the property benefits from a private rear garden, providing a pleasant outdoor space to relax and enjoy.

Offering substantial living space in a highly convenient location, early viewing is highly recommended to fully appreciate all that this impressive home has to offer.

Council Tax Band: B

Tenure: Freehold

Price: Starting Bid £115,000

Property Type: Terraced House

Parking: On Street

Heating: Gas

External Front



Entrance Hall

5.313m x 1.808m (17'5" x 5'11")



Living Room

4.294m x 2.847m (14'1" x 9'4")



Kitchen Diner

4.90m x 4.70m (16'0" x 15'5")



First Floor Landing

5.952m x 1.964m (19'6" x 6'5")



Bedroom 1

4.215m x 3.649m (13'9" x 11'11")



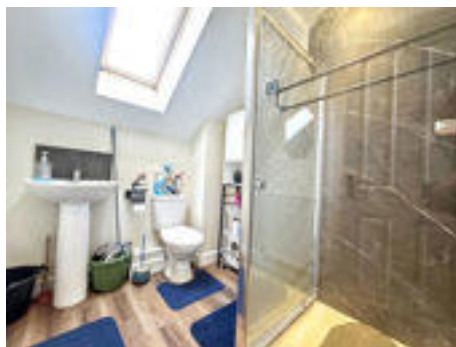
Bedroom 2

4.145m x 2.659m (13'7" x 8'8")



Bathroom 2

2.298m x 2.029m (7'6" x 6'7")



Bedroom 3

4.208m x 2.702m (13'9" x 8'10")



Bedroom 4

4.00m x 2.71m (13'1" x 8'10")



Bathroom


2.406m x 1.973m (7'10" x 6'5")



Rear Garden





Energy Efficiency Rating		
	Current	Potential
<i>Very energy efficient - lower running costs</i>		
(92-100) A		
(81-91) B		88
(69-80) C	79	
(55-68) D		
(39-54) E		
(21-38) F		
(1-20) G		
<i>Not energy efficient - higher running costs</i>		
England, Scotland & Wales		EU Directive 2002/91/EC 

Atkinson Road, Newcastle upon Tyne, Tyne and Wear, NE4 8XX

Contact your local branch today for more information on this property:

79 Victoria Road East, Thornton-Cleveleys, Lancashire, FY5 5BU, www.seea.co.uk/index.php

These particulars, whilst believed to be accurate are set out as a general outline only for guidance and do not constitute any part of an offer or contract. Intending purchasers should not rely on them as statements of representation of fact, but must satisfy themselves by inspection or otherwise as to their accuracy. No person in this firm's employment has the authority to make or give any representation or warranty in respect of the property.

